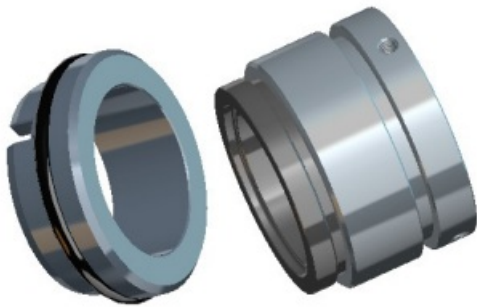


结构特点 Design features

- 内装、单端面、多弹簧、平衡型、销钉传动结构，任意旋向，弹性元件不与介质接触，抗阻塞能力强。
- 安装尺寸符合 EN 12756 标准。
- Internally mounted, single face, multiple spring, balanced structure, and driven by spina, any rotation direction, spring no-touch to medium, has a stronger antiblocking condition.
- Conform to the standard of EN 12756

材料 Materials(to DIN24960)

- 旋转环 Rotary Ring: A、B、Q2、U1、U2
- 静止环 Stationary Ring: E、G、Q2、U1、U2、V1
- 辅助密封 Auxiliary Seal: P、E、V、M1
- 弹簧及其他结构件材料 Spring and Other Parts: F、G



适用范围 Operating limits

- 压力 Pressure: $\leq 2.0\text{MPa}$
- 温度 Temperature: $-20\sim 200^\circ\text{C}$
- 线速度 Speeds: $\leq 20\text{m/sec}$
- 粘度 Viscosity: $\leq 1.0\text{Pa}\cdot\text{s}(1000\text{cp})$ 软对硬(Soft VS Hard)
 $\leq 3.5\text{Pa}\cdot\text{s}(3500\text{cp})$ 硬对硬(Hard VS Hard)

用途 Applications

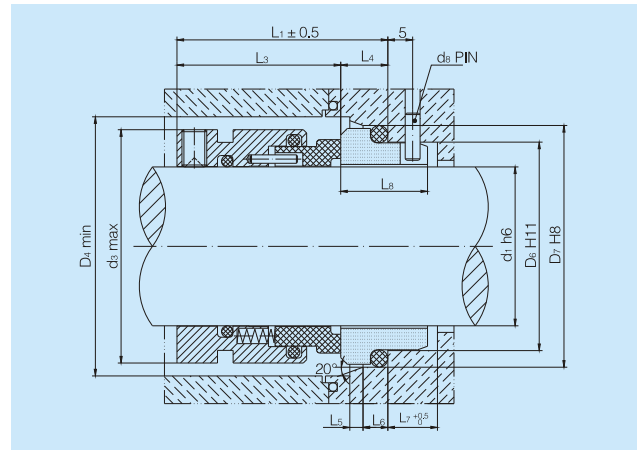
用于造纸、制糖、给排水、污水处理等工业的泵类的旋转轴密封。

Used in all of rotating equipment, pumps, to suit industries such as papermaking, sugar-making industry, water and sewage water.

介质 Medium

含固体颗粒、高粘度介质及其它弱腐蚀性溶液。

Solid grains medium, high viscosity medium and other weak corrosive fluid.



型号 Model	d1	d3	D4	D6	D7	d8	L1	L3	L4	L5	L6	L7	L8
CN U2-24	24	39	40	33	39	3	50.0	38.5	11.5	2.0	5	9	18.0
CN U2-25	25	40	41	34	40	3	50.0	38.5	11.5	2.0	5	9	18.0
CN U2-28	28	43	44	37	43	3	50.0	38.5	11.5	2.0	5	9	18.0
CN U2-30	30	45	46	39	45	3	50.0	38.5	11.5	2.0	5	9	18.0
CN U2-32	32	47	48	42	48	3	50.0	38.5	11.5	2.0	5	9	18.0
CN U2-33	33	48	49	42	48	3	50.0	38.5	11.5	2.0	5	9	18.0
CN U2-35	35	50	51	44	50	3	50.0	38.5	11.5	2.0	5	9	18.0
CN U2-38	38	55	58	49	56	4	55.0	41.0	14.0	2.0	6	9	20.5
CN U2-40	40	57	60	51	58	4	55.0	41.0	14.0	2.0	6	9	20.5
CN U2-43	43	60	63	54	61	4	56.5	42.5	14.0	2.0	6	9	20.5
CN U2-45	45	62	65	56	63	4	56.5	42.5	14.0	2.0	6	9	20.5
CN U2-48	48	65	68	59	66	4	56.5	42.5	14.0	2.0	6	9	20.5
CN U2-50	50	67	70	62	70	4	60.0	45.0	15.0	2.5	6	9	21.5
CN U2-53	53	70	73	65	73	4	60.0	45.0	15.0	2.5	6	9	21.5
CN U2-55	55	72	75	67	75	4	60.0	45.0	15.0	2.5	6	9	21.5
CN U2-58	58	79	83	70	78	4	65.0	50.0	15.0	2.5	6	9	21.5
CN U2-60	60	81	85	72	80	4	65.0	50.0	15.0	2.5	6	9	21.5
CN U2-63	63	84	88	75	83	4	65.0	50.0	15.0	2.5	6	9	21.5
CN U2-65	65	86	90	77	85	4	65.0	50.0	15.0	2.5	6	9	21.5
CN U2-68	68	89	93	81	90	4	65.0	50.0	15.0	2.5	7	9	21.5
CN U2-70	70	91	95	83	92	4	74.0	57.0	17.0	2.5	7	9	23.0
CN U2-75	75	99	104	88	97	4	74.0	57.0	17.0	2.5	7	9	23.0
CN U2-80	80	104	109	95	105	4	79.0	62.0	17.0	3.0	7	9	23.2
CN U2-85	85	109	114	100	110	4	79.0	62.0	17.0	3.0	7	9	23.2
CN U2-90	90	114	119	105	115	4	79.0	62.0	17.0	3.0	7	9	23.2
CN U2-95	95	119	124	110	120	4	79.0	62.0	17.0	3.0	7	9	23.2
CN U2-100	100	124	129	115	125	4	79.0	62.0	17.0	3.0	7	9	23.2